



VOL. 2 NO. 2, MAY 1963



NATIONAL CONVENTION
JUNE 2-9
MYRTLE BEACH, S.C.

NATIONAL PRES.

FEMALE MEMBER

Dear Brothers,

During the last two years, we have made strides toward bettering the national organization. In this period we have published four issues of The Clef, we planned our third National Convention, and have designed a fraternity pin which we will all receive. The brochure designed to encourage the formation of new chapters has been printed and circulated throughout the Southeast, and an official Mu Beta Psi decal has been adopted.

For those of you just entering Mu Beta Psi, the work has just begun. I sincerely hope that each of you will work diligently to better it in any way possible. We must always maintain our high standing among other music fraternities across the nation.

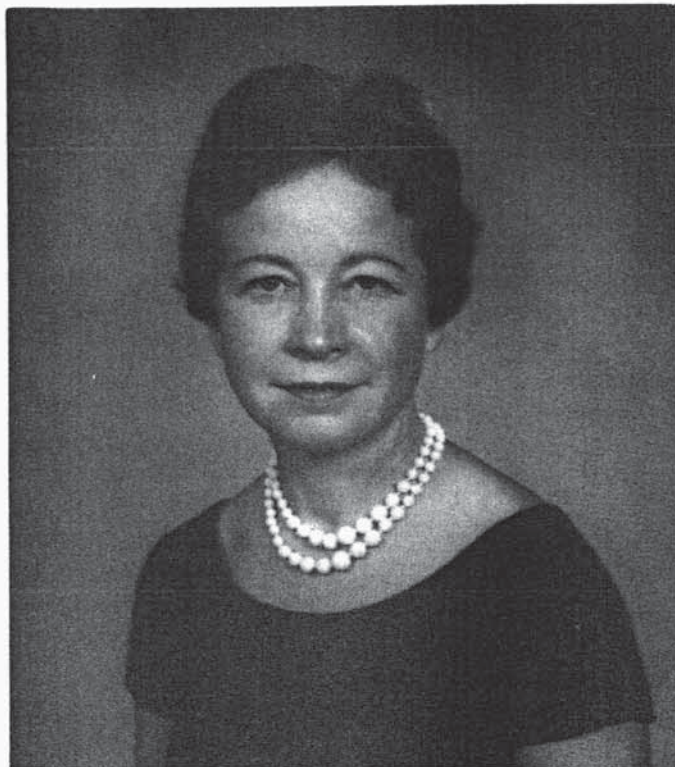
I would like to take this opportunity to express my appreciation to those of you who have elected me as president for the past two years. I have enjoyed serving Mu Beta Psi and it will always be one of my fondest memories. As we look forward to the National Convention in June, I would like for you to keep in mind your nominations for next year's officers. The future of our fraternity will rest heavily on the leaders you select. I am looking forward to seeing each of you in June.

Sincerely,

Buddy O'Kelley

DECAL

At this time the Mu Beta Psi official decal is in plentiful supply at the office of the Executive Secretary. The decal which carries the same design as the Key, can be purchased for 25¢, is in the fraternity colors, and measures approximately four inches by three inches. These decals may be used anywhere. It is hoped that interest will be shown and these decals will be purchased and displayed on each brother's car, instrument case, etc.



As a result of the Constitution being changed to allow for the induction of female members, Marjorie C. Montville, Secretary for the Department of Bands at Clemson was unanimously selected by members of the Delta chapter as an honorary member.

Mrs. Montville is a native of Ohio, lived in North Carolina for several years, and moved her residence from Atlanta, Georgia in 1958 to establish a home in Clemson while her son was attending Clemson College.

Her help and kindness is a great asset to the Delta chapter and to the bands on the campus. Her understanding of music and the workings of musical organizations greatly enhance her value in her position. In addition to her secretarial duties, she spends much time in the role of friend and counselor to hundreds of Clemson students.

NATIONAL SEC.

What with two national conventions in one school year (albeit they fell in different calendar years), preparation and distribution of fraternity decals, our expansion brochures, and the problem of getting to know what my duties as National Executive Secretary entailed, this has been a rather busy year.

Throughout this year, however, my tasks have been made much easier by the splendid cooperation and assistance of the brothers of the fraternity. For all the much-needed assistance I extend my heartiest thanks. Especially must I cite Brother Kutschinski, my predecessor in this office, for the wonderful shape the national records were in. Without his carefully-kept records, dating back some thirty-or-so years, the assumption of my office would have presented almost insuperable difficulties.

In our upcoming National Convention, to be held at Myrtle Beach, S. C., I hope to renew acquaintances with the brothers of Alpha, and get to meet the nineteen new Alpha members taken into the fraternity recently. I hope many of them will be in attendance, and that our convention can be a great business and social success. I will at that time make a financial accounting for the year, and inform the convention of progress in the area of expansion.

In addition, I intend to propose two things for consideration by the delegates to the convention. I will state them here, and hope you will all have a chance to consider them and talk them over with each other before we convene. First, I feel that our initiation ritual as it applies to honorary members being initiated needs considerable re-vamping. At present there is no difference between honorary and regular initiation ritual, and I am sure you will see many points where the two cannot really be the same.

Finally, I hope you will consider working toward some sort of provision whereby active membership in Mu Beta Psi will be contingent upon active and continuing participation in musical groups, the membership in which made members eligible for initiation in the first place. If our goal is to be betterment of music on our respective campuses, it seems to me that one of the most obvious and cogent ways to accomplish this goal is through continuing participation.

I hope you will give these two ideas some serious thought between now and convention time, and also bring to the convention your ideas as to how we can make Mu Beta Psi an even more worthwhile and productive organization.

John H. Butler
Executive Secretary

MUSIC SURVEY DELTA

At the beginning of second semester at Clemson, the Delta Chapter printed a questionnaire and distributed it to the faculty members of the college. Its purpose was to evaluate the adequacy of present musical entertainment on the campus, receive suggestions as to any improvements that could be made, and also to ascertain the type of music preferred by this selected group.

The questionnaire was well received by the faculty and the results showed its purpose worthwhile. The replies tended to show an inadequacy in Clemson's musical presentations. The taste in music ran primarily along the lines of Chamber music and Broadway musicals. It was plainly shown by the questionnaires that Mu Beta Psi would profit by sponsoring recitals of talented local musicians and presenting more outdoor concerts in the local amphitheater.

The Delta Chapter hopes that next year it will be able to work toward alleviation of this deficiency in our music
2. entertainment and education.

MUSIC FUND

DELTA

Members of the Delta Chapter decided during the football season just past, that they would cause to have pressed recordings of Clemson College songs. These recordings, which were subsequently made by Crest Records, a New York firm, are seven-inch long-playing records, and sell for one dollar each. The Clemson College Concert Band, directed by National Executive Secretary John H. Butler, performs the "Alma Mater" and "Tiger Rag" on one side of the disc, and the Clemson Glee Club, directed by honorary member Dr. Hugh H. McGarity, sing five Clemson songs on the other side.

Records were first put on sale during November of 1962, and since that time over one thousand have been sold. Total profits to date are \$561.85, on deposit at the Clemson student bank, and over three hundred fifty copies are left to sell, which will make a deposit of over nine hundred dollars when present stock is depleted.

The money has been set aside in a special "Mu Beta Psi College Music Service" fund, and has been earmarked for a project which will promote music on the Clemson campus. Very probably this money will be used to help furnish listening rooms in the new library which will soon be constructed at Clemson.

MBP PIN

One of the major points to be discussed at the National Convention is the fraternity pin. The brothers of the Delta chapter were very pleased with the basic design submitted by the Alpha chapter. The National President has made two trips to Atlanta to talk personally with the Balfour Company district office. They have assured him that he will receive a list of jewelry charges and a die charge before the convention. It would seem that we can all look forward to wearing a pin next year.

PAUL YODER



On Friday night, October 19, 1962 following the "Brothers Four" concert Mu Beta Psi, Delta Chapter of Clemson, added the well known name of Paul Yoder, noted arranger and composer to the honorary and life membership list of the organization. Mr. Yoder, who was here at Clemson to direct bands as guest conductor for "Band Day", has been arranging and composing music for school and college bands for the past thirty years.

Mr. Yoder is a graduate of the University of North Dakota, of Northwestern University and was recently awarded an honorary Doctor of Music degree from the University of North Dakota. He is the newly-elected President of the American Bandmasters Association and a long-time member of ASCAP, the American Society of Composers, Authors and Publishers.

He is known throughout the country for his many compositions and published transcriptions, but is best known at Clemson for his scoring of "Tiger Rag". He made the published arrangements for such well-known Broadway hits as: "Kiss Me Kate", "Gypsy", "Do Re Mi", "Camelot", and "Damn Yankees".

PLEDGE CLASS

DELTA

On Friday night May 3, Delta Chapter of Mu Beta Psi took into membership thirteen new brothers. These men were: Cary Counts, Ike Williams, Steve King, Eddie Collins, Milton Turner, Jerry Littlejohn, Horace Hudson, Philip Inglis, Frank Falls, Marion Shealy, Harold Joye, Tommy Matthews and Eddie Myers.

These brothers had just completed a pledge period which was climaxed by "Hell Week." The pledges wore the traditional plaque and carried their paddle and "goody" box, but this did not end the fun. Each night the pledges performed an original skit for the entertainment of the brothers and were much enjoyed. Work periods for the pledges were set up and with the full cooperation of all, a great deal was accomplished. The formal initiation ritual was given to the pledges on Friday night and each one was then warmly welcomed into the membership of the chapter.

FRAT. SING

DELTA

On April 23 the Delta Chapter presented its third annual "Fraternity Sing." This presentation is designed to help promote a better relationship both spiritually and mentally among Clemson social fraternities. The fraternities are rewarded with a plaque and points toward fraternity of the year for their participation. The groups which represent each fraternity have to be made up of twelve or more brothers and they are judged on originality, musical ability, costumes and audience reaction. Sigma Alpha Zeta walked off with top honors this year with their group known as the "Zeta Minstrels." Phi Kappa Delta and Kappa Delta Chi were first and second runner up. The show was a great success and enjoyed by all.

BAND BANQUET

DELTA

On May 10 the seventh annual Department of Bands' banquet was held in the beautiful Clemson Room of the Clemson House. This is a high-light of the year as it ends all of the untiring efforts that have been put into the bands for the year. Sponsored by The Department of Bands here at Clemson, this banquet recognizes all of those who have given their time and work for either the Concert, Military, or "Tiger" band. Many Delta Chapter members were honored with awards and letters for their work. Among these members being recognized for service in the "Tiger Band" were Jim Webb and Kistler Gable who received five-year certificates. Those receiving four-year service certificates were Wes Craig, Earl Frick, Terry Kinard, Joe Gable, and Wayne Rish. Receiving their three-year awards, which is a letter presented along with sweater or jacket, were Charles Martin, Nettles Myers, Ike Williams, Terry Williams, Eddie Myers, and Eddie Collins.

Delta members being recognized for Concert band service were LeRoy Adams, who received a four-year certificate. Charles Martin and Hugh Turner received their three-year award.

We would like to thank Marjorie C. Montville, Secretary for the Dept. of Bands, without whose help this publication would not have been possible.

THE CLEF STAFF

Reporters Hugh Turner
. Harold Joye

Editor. . . Nettles A. Myers, Jr.

HOPE TO SEE YOU AT THE BEACH

Spring Sounds

DELTA

The Delta Chapter of Mu Beta Psi, here at Clemson presented the fifth annual SPRING SOUNDS concert on Thursday, 28 March, in the College Auditorium.

This year's program was bigger and better according to informed sources on campus. The showcase offered to the listener all basic forms of music including dance band, folk music, rock'n roll, popular and choral works. Featured this year were "The Jungaleers", "The Blue Notes", "The Caravelles", "The Phi Kapp", "The Caribbeans", and the Clemson College Glee Club.

"The Jungaleers" and "The Blue Notes", who specialize in big band music and are known throughout the South and Southeast, added much to the show. "The Caribbeans," who are a new folk group here at Clemson, received a great round of applause for their exciting folk ballads and music which has literally taken over the college campus today.

"The Caravelles," one of the hottest rock'n-roll bands ever to appear in SPRING SOUNDS, fascinated the audience with their swing style.

Committee heads for the production were: printing, Terry Williams; stage, Charles Nicholson; lighting, Jack Agee; advertising, LeRoy Adams; publication, Nettles Myers; and co-ordination, Buddy O'Kelley.

As in past years people came from neighboring towns and colleges to witness Clemson's musical organizations. This year's show drew an attendance in excess of 1,000 people.

OFFICERS

DELTA

The new officers for the Delta Chapter were elected on May 7 for the coming school year. Accepting these offices were: Hugh Turner, President; Tom Adams, Vice-President; Milton Turner, Secretary; and Horace Hudson, Treas.

DROP INS

DELTA

During the year the Delta Chapter at Clemson has played host to many musical groups and guests at "Drop-In's". As a part of increasing interest in Mu Beta Psi and music at Clemson these functions were held after many athletic events to entertain the visiting musicians. Many groups here on concert tour were entertained and during any dance weekend, Mu Beta Psi members and their dates can always be found in the "Psi" room during dance intermission. Under the very able leadership of Wes Craig and Tommy Adams who were chairmen of the social and house committee, in that order, everything has run in fine form for the year. Among the outside groups entertained were the University of Georgia "Dixie Redcoat" band, the colorful "Georgettes", the U.S.C. "Gamecock" band, the Coker College Glee Club, the Limestone College Glee Club, the Lander College Glee Club, and entertainers who participated in SPRING SOUNDS.

Tiger Band

DELTA

CONCERT BAND

DELTA

In keeping with Mu Beta Psi's policy to promote music on campus, the Delta Chapter has placed some fine young men on the staff of both the Concert Band and "Tiger Band". Eddie Collins will act as Commander of "Tiger Band" for 1963-1964 along with Eddie Myers as Vice Commander; Jerry Littlejohn, as Sergeant Major; Tommy Mathews, Assistant Supply Officer; and Charles Martin, Librarian. These boys, all being Mu Beta Psi brothers are certain to give the "Tiger Band" one of its best years yet.

Another Delta brother, LeRoy Adams, is President of the Concert Band

PLEDGES

ALPHA

On April 29, formal initiation was held for nineteen pledges of Mu Beta Psi, Alpha Chapter at N. C. State College. After serenading in driving rain at two of the local girls' schools, the pledges were then put through the steps of the formal initiation. This is the largest number of initiates at one time for Alpha Chapter in over five years, mostly due to the increasing numbers of those in music at N. C. State College. Those initiated are: from the Glee Club - Ed Jenkins, Billie Jones, Mendall Jordan, Wade Poteet, Fred Partin; Fanfare Band - Philip Fishel, Tom Flinchum, Bill Haddon, Harry Hartsell, Bill Hurst, Ralph McGill, Mike McLeod; Symphonic Band - Bill Brantley, Gene Eagle, Bob Foster, Bob Johnson, Stuart Holoman, Bill Sides, and John Monroe.

CONCERT USHERS

DELTA

Mu Beta Psi has been of great service to Clemson College and the Department of Bands in the field of service work. The Delta brothers have ushered at numerous concerts put on by the college and also the Department of Bands. On May 14 the brothers ushered at the highlight of the concert season here at Clemson, the "Pops Concert" in the amphitheater. This concert was performed by the Clemson College Concert band in a magnificent style under the direction of John H. Butler, Director of Bands of Clemson College and National Executive Secretary of Mu Beta Psi.

OFFICERS

ALPHA

The officers for Alpha Chapter for next year are President, Bill Caldwell; Vice President, Ralph Daniel; Secretary, ... Robert Johnson; Treasurer, Stuart Holoman; CLEF Editor, Mendall Jordan; Publicity Director, Gene Eagle; and Corresponding Secretary, John Ellis.

BEACH TRIP

The Alpha Chapter of North Carolina State College and the Delta Chapter of Clemson College have completed plans for the 1963 National Convention of Mu Beta Psi. The convention is to be held at Myrtle Beach, S.C. from June 2 through June 9. Both chapters will be housed at the Sands Apartments, South Ocean Boulevard. A deposit of \$50.00 has been paid for the apartment and the remainder is due on arrival at the beach. The cost per member will be \$10.00 per week plus the rental of linens.

This week is planned as a combination of business and pleasure. It promises to be an enjoyable week for all present. With the house-party atmosphere, the brothers of the two chapters will have a good chance to become better acquainted, and the serious business of the national convention will be conducted in congenial surroundings. John H. Butler, Director of Bands at Clemson College, faculty adviser of Delta Chapter, and National Executive Secretary of Mu Beta Psi, will serve as chaperon for the event.

Alpha chapter will have approximately six members in attendance and Delta chapter will have approximately twenty-five members present.

MUSIC COURSE

ALPHA

During this spring semester, N.C. State College is offering students its first course in music. Music 200, or Music in Contemporary Life, as the course is called, meets twice a week with three hours credit. The course deals with the minor theories in music, as well as with the basic aspects of music appreciation. Actual listening to music on disc and tape constitutes about 75% of the course work. The course, part of an expanding liberal arts program at State, is presently being taught by Mr. J. Perry Watson, Honorary, Alpha, and

6 Director of Music at State.